

COUNTY OF LOS ANGELES
ROAD DEPARTMENT

PRECISE
BENCH MARK LIST



HI VISTA QUAD
1965 ADJUSTMENT
(LANCASTER EAST)
NGVD29 DATUM

PREFACE

The Road Department level net is composed of more than 1,000 miles of levels supporting in excess of 10,000 bench marks. In 1964-65, a major readjustment of the net was undertaken. To emphasize the complete break with previous elevations, the SY, SG & SL series bench marks have been re-labeled BY, BG & BL, respectively.

To facilitate the adjustment, indexing, and distribution of adjusted values of the net, the County territory was divided into 31 quads or areas. For identification purposes each quad was given a name, viz., "Rosemead," "La Mirada," "Santa Fe," etc. When bench marks and elevations in the Road Department net are used, the name of the quad in which the bench mark is located and the date of the adjustment of the elevation must be included in the bench mark description, e.g.,

BG 1887 --L+BN IN CONC HDWL OF DRAIN PIPE UNDER DR 218 FT
NE +18 FT SE C/L INT GRAND AVE +CAMERON AVE MKD (BM)
(COVINA --1965) ELEV. 696.238

It is expected that this general adjustment will, for the most part, remain sound for the next 8 to 12 years. As new circuits are completed, however, re-adjustment of individual quads may become advisable. It is expected that these subsequent adjustments will be in the nature of a few hundredths of a foot. When a quad is re-adjusted, new elevation lists will be published and the date of the re-adjustment will replace the "1965" at the end of the bench mark description. Two bench marks in the same quad with different adjustment dates will not normally join each other. Since all adjustments taper out to nothing at the periphery of the quad, any bench mark in one quad will join any bench mark in another quad regardless of their respective adjustment dates.

The basic accuracy of the net is reflected by an indicated field probable error of plus or minus 0.012 foot per mile of leveling as determined from 298 conditions of closure. However, many years experience in vertical control in the greater Los Angeles basin and Antelope Valley indicate that because of varying degrees of subsidence and heaving, the true datum is recovered only by obtaining substantial agreement of a number of bench marks.

The users of this net are invited to assist in its maintenance by notifying this Department of cases of obliteration, apparent mistakes in descriptions or elevations, and proven disturbance of bench marks.

DATUM: U. S. Coast and Geodetic Survey Sea Level Datum
of 1929, through the medium of the Los Angeles
County Engineer Precise Level Net, 1963 Adjust-
ment.

ABBREVIATIONS USED IN BENCH MARK LISTINGS

ABUT - - - - -	Abutment	EC - - - - -	End of Curve
ALG - - - - -	Along	ENT - - - - -	Entrance
ANG PT - - - - -	Angle Point	FL - - - - -	Floor
B/W - - - - -	Back of Walk	FTG - - - - -	Footing
BCR - - - - -	Beginning of Curb Return	F/W - - - - -	Front of Walk
BC - - - - -	Beginning of Curve	GAR - - - - -	Garage
BLDG - - - - -	Building	HDWL - - - - -	Headwall
EM - - - - -	Bench Mark	HSE - - - - -	House
BT SPK - - - - -	Boat or Bolt Spike	INT - - - - -	Intersection
BR CAP - - - - -	Brass or Bronze Cap	IP - - - - -	Iron Pipe
C B - - - - -	Catch Basin	LT - - - - -	Left
CTR - - - - -	Center	LACE - - - - -	L. A. City Engineer
C/L - - - - -	Center Line	LACS - - - - -	L. A. County Engineer
C/L INT - - - - -	Center Line Intersection	L AFC - - - - -	L. A. Co. Flood Control
C/L PROD - - - - -	Center Line Produced	L+BN - - - - -	Lead and Bench Nail
CONC - - - - -	Concrete	L+BR - - - - -	Lead and Brad
COR - - - - -	Corner	L+N - - - - -	Lead and Nail
COE - - - - -	Corps of Engineers	L+RDEM TAG - - - - -	Lead and Road Dept. Bench Mark Tag
CULV - - - - -	Culvert	L+SPK - - - - -	Lead and Spike
CB - - - - -	Curb	L+T - - - - -	Lead and Tack
CS MON - - - - -	County Engineer Monument	MCR - - - - -	Middle of Curb Return
CS BR CAP - - - - -	County Engineer Brass Cap	MKD - - - - -	Marked
CT SPK - - - - -	Cut Spike	MC - - - - -	Middle of Curve
DR - - - - -	Drive or Driveway	MON - - - - -	Monument
E/O - - - - -	East of	N/O - - - - -	North of
ECR - - - - -	End of Curb Return	NR - - - - -	Near

ABBREVIATIONS USED IN BENCH MARK LISTINGS . . . CONTINUED

OPP - - - - - Opposite
PI - - - - - Point of Intersection
PK+W - - - - - PK Nail and Washer
P/L - - - - - Property Line
POST - - - - - Point on Semi-Tangent
PP - - - - - Power Pole
PVMT - - - - - Pavement
PROD - - - - - Produced
RD - - - - - Road
RDEM - - - - - Road Dept. Bench Mark
RR - - - - - Railroad
RT - - - - - Right
R/W - - - - - Right of Way
SDMH - - - - - Storm Drain Manhole
SMH - - - - - Sewer Manhole
SPK - - - - - Spike
ST+W - - - - - Spike Tin and Washer
S/O - - - - - South of
TP - - - - - Telephone Pole
USC+GS - - - - - U. S. Coast and Geodetic Survey
USGS - - - - - U. S. Geological Survey
WK - - - - - Walk
W/O - - - - - West of

K E R N

C O U N T Y

Q U A D

H I V I S T A Q U A D

C O U N T Y

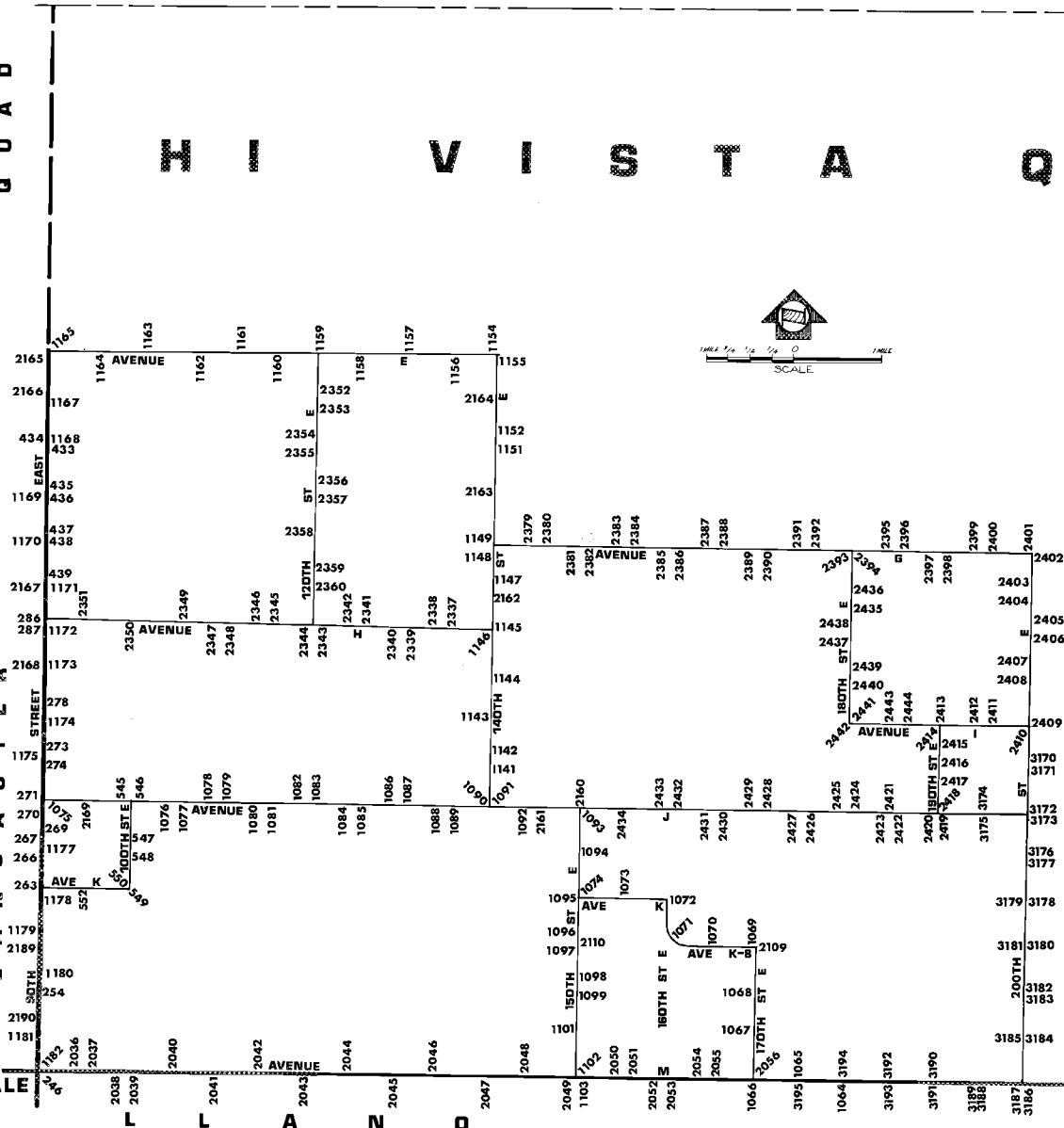
B E R N A R D I N O

S A N

P A L M D A L E
Q U A D

Q U A D

L A N C A S T E R
S T R E E T



2165
2166
434
1169
1170
2167
286
287
2168
278
1174
1175
273
274
271
270
267
266
263
1179
2189
1180
254
2190
1181

1163
1162
1161
1159
1158
1157
1156
1155
1164
1167
1168
433
435
436
437
438
439
1171
2351
1172
1173
278
1174
273
274
271
270
267
266
263
1179
2189
1180
254
2190
1181

2036
2037
2040
2042
2044
2046
2048
2049
1103
2050
2051
2052
2053
2054
2055
1066
3195
1064
3193
3191
3188
3187
3186

2036
2037
2040
2042
2044
2046
2048
2049
1103
2050
2051
2052
2053
2054
2055
1066
3195
1064
3193
3191
3188
3187
3186

2036
2037
2040
2042
2044
2046
2048
2049
1103
2050
2051
2052
2053
2054
2055
1066
3195
1064
3193
3191
3188
3187
3186

2036
2037
2040
2042
2044
2046
2048
2049
1103
2050
2051
2052
2053
2054
2055
1066
3195
1064
3193
3191
3188
3187
3186

2036
2037
2040
2042
2044
2046
2048
2049
1103
2050
2051
2052
2053
2054
2055
1066
3195
1064
3193
3191
3188
3187
3186

2036
2037
2040
2042
2044
2046
2048
2049
1103
2050
2051
2052
2053
2054
2055
1066
3195
1064
3193
3191
3188
3187
3186

2036
2037
2040
2042
2044
2046
2048
2049
1103
2050
2051
2052
2053
2054
2055
1066
3195
1064
3193
3191
3188
3187
3186

2036
2037
2040
2042
2044
2046
2048
2049
1103
2050
2051
2052
2053
2054
2055
1066
3195
1064
3193
3191
3188
3187
3186

2036
2037
2040
2042
2044
2046
2048
2049
1103
2050
2051
2052
2053
2054
2055
1066
3195
1064
3193
3191
3188
3187
3186

2036
2037
2040
2042
2044
2046
2048
2049
1103
2050
2051
2052
2053
2054
2055
1066
3195
1064
3193
3191
3188
3187
3186

2036
2037
2040
2042
2044
2046
2048
2049
1103
2050
2051
2052
2053
2054
2055
1066
3195
1064
3193
3191
3188
3187
3186

2036
2037
2040
2042
2044
2046
2048
2049
1103
2050
2051
2052
2053
2054
2055
1066
3195
1064
3193
3191
3188
3187
3186

2036
2037
2040
2042
2044
2046
2048
2049
1103
2050
2051
2052
2053
2054
2055
1066
3195
1064
3193
3191
3188
3187
3186

2036
2037
2040
2042
2044
2046
2048
2049
1103
2050
2051
2052
2053
2054
2055
1066
3195
1064
3193
3191
3188
3187
3186

2036
2037
2040
2042
2044
2046
2048
2049
1103
2050
2051
2052
2053
2054
2055
1066
3195
1064
3193
3191
3188
3187
3186

2036
2037
2040
2042
2044
2046
2048
2049
1103
2050
2051
2052
2053
2054
2055
1066
3195
1064
3193
3191
3188
3187
3186

2036
2037
2040
2042
2044
2046
2048
2049
1103
2050
2051
2052
2053
2054
2055
1066
3195
1064
3193
3191
3188
3187
3186

2036
2037
2040
2042
2044
2046
2048
2049
1103
2050
2051
2052
2053
2054
2055
1066
3195
1064
3193
3191
3188
3187
3186

2036
2037
2040
2042
2044
2046
2048
2049
1103
2050
2051
2052
2053
2054
2055
1066
3195
1064
3193
3191
3188
3187
3186

2036
2037
2040
2042
2044
2046
2048
2049
1103
2050
2051
2052
2053
2054
2055
1066
3195
1064
3193
3191
3188
3187
3186

2036
2037
2040
2042
2044
2046
2048
2049
1103
2050
2051
2052
2053
2054
2055
1066
3195
1064
3193
3191
3188
3187
3186

2036
2037
2040
2042
2044
2046
2048
2049
1103
2050
2051
2052
2053
2054
2055
1066
3195
1064
3193
3191
3188
3187
3186

2036
2037
2040
2042
2044
2046
2048
2049
1103
2050
2051
2052
2053
2054
2055
1066
3195
1064
3193
3191
3188
3187
3186

2036
2037
2040
2042
2044
2046
2048
2049
1103
2050
2051
2052
2053
2054
2055
1066
3195
1064
3193
3191
3188
3187
3186

2036
2037
2040
2042
2044
2046
2048
2049
1103
2050
2051
2052
2053
2054
2055
1066
3195
1064
3193
3191
3188
3187
3186

2036
2037
2040
2042
2044
2046
2048
2049
1103
2050
2051
2052
2053
2054
2055
1066
3195
1064
3193
3191
3188
3187
3186

2036
2037
2040
2042
2044
2046
2048
2049
1103
2050
2051
2052
2053
2054
2055
1066
3195
1064
3193
3191
3188
3187
3186

2036
2037
2040
2042
2044
2046
2048
2049
1103
2050
2051
2052
2053
2054
2055
1066
3195
1064
3193
3191
3188
3187
3186

2036
2037
2040
2042
2044
2046
2048
2049
1103
2050
2051
2052
2053
2054
2055
1066
3195
1064
3193
3191
3188
3187
3186

2036
2037
2040
2042
2044
2046
2048
2049
1103
2050
2051
2052
2053
2054
2055
1066
3195
1064
3193
3191
3188
3187
3186

2036
2037
2040
2042
2044
2046
2048
2049
1103
2050
2051
2052
2053
2054
2055
1066
3195
1064
3193
3191
3188
3187
3186

2036
2037
2040
2042
2044
2046
2048
2049
1103
2050
2051
2052
2053
2054
2055
1066
3195
1064
3193
3191
3188
3187
3186

2036
2037
2040
2042
2044
2046
2048
2049
1103
2050
2051
2052
2053
2054
2055
1066
3195
1064
3193
3191
3188
3187
3186

2036
2037
2040
2042
2044
2046
2048
2049
1103
2050
2051
2052
2053
2054
2055
1066
3195
1064
3193
3191
3188
3187
3186

2036
2037
2040
2042
2044
2046
2048
2049
1103
2050
2051
2052
2053
2054
2055
1066
3195
1064
3193
3191
3188
3187
3186

2036
2037
2040
2042
2044
2046
2048
2049
1103
2050
2051
2052
2053
2054
2055
1066
3195
1064
3193
3191
3188
3187
3186

2036
2037
2040
2042
2044
2046
2048
2049
1103
2050
2051
2052
2053
2054
2055
1066
3195
1064
3193
3191
3188
3187
3186

2036
2037
2040
2042
2044
2046
2048
2049
1103
2050
2051
2052
2053
2054
2055
1066
3195
1064
3193
3191
3188
3187
3186

2036
2037
2040
2042
2044
2046
2048
2049
1103
2050
2051
2052
2053
2054
2055
1066
3195
1064
3193
3191
3188
3187
3186

2036
2037
2040
2042
2044
2046
2048
2049
1103
2050
2051
2052
2053
2054
2055
1066
3195
1064
3193
3191
3188
3187
3186

QUAD-YEAR	ELEV	D E S C R I P T I O N (INCLUDE QUAD AND YEAR IN DESCRIPTION)	BM	NUMBER
BASELINE (1965)	2523.907	CS MON IN WELL @ C/L INT AVE M + 90TH ST E MKD (SEC COR 31 32 5 6 T6N T7N R10W)	BL	246
BASELINE (1965)	2496.483	CS MON IN WELL @ C/L INT AVE L + 90TH ST E MKD (T7N R10W, SEC COR 29,30,31,32)	BL	254
BASELINE (1965)	2473.603	CS MON 30IN DN @ C/L INT AVE K + 90TH ST E MKD (T7N R10W SEC 19 20 29 30)	BL	263
BASELINE (1965)	2455.242	CS MON 30IN DN @ C/L INT AVE J-8 + 90TH ST E MKD (R10W T7N 1/4 SEC 19 20)	BL	266
BASELINE (1965)	2450.692	L+T N END 1ST STEP OF PORCH OF HSE NO 44233 90TH ST E 100FT W C/L + 1000FT S AVE J	BL	269
BASELINE (1965)	2444.714	L+T NR SE EDGE CONC BASE NR CTR OF GAS PUMP ISL 60FT W C/L 90TH ST E + 60FT N C/L AVE J	BL	270
BASELINE (1965)	2442.962	CS MON 15IN DN @ C/L INT 90TH ST E + AVE J MKD (T7N R10W SEC COR 18 17 19 20)	BL	271
BASELINE (1965)	2432.999	L+T NR E EDGE CONC PORCH HSE NO 44709 90TH ST E 79FT W C/L + 2200FT N AVE J 6FT N OF S EDGE PORCH	BL	273
BASELINE (1965)	2426.784	CS MON 20IN DN @ C/L INT 90TH ST E + AVE I-8 MKD (1/4 SEC 17 18 T7N R10W)	BL	274
BASELINE (1965)	2414.157	CS MON 12IN DN @ C/L INT 90TH ST E + AVE I MKD (R10W T7N COR SEC 7,8,17,18)	BL	278
BASELINE (1965)	2394.238	CS MON @ C/L INT AVE H + 90TH ST E MKD (R10W T7N COR SEC 5 6 7 8)	BL	286
BASELINE (1965)	2395.698	RDBM TAG @ CTR OF OLD CONC BASE OF MTR MOUNT 40FT W C/L 90TH ST E + 100FT N C/L AVE H	BL	287
BASELINE (1965)	2355.879	L+T CONC FOUNDATION OF WATER TOWER 6FT W + 1.5FT N OF SE COR @ NW COR 90TH ST E + AVE F 45FT N + 95FT W C/L INT MKD (SLBM)	BL	433
BASELINE (1965)	2355.517	CS MON 12IN DN @ C/L INT 90TH ST E + AVE F MKD (SEC COR 30 29 31 32 R10W T8N)(E EDGE)	BL	434
BASELINE (1965)	2366.889	L+T 1ST STEP OF CONC PORCH OF APT UNIT NO 47205 @ THE NW COR 90TH ST E + AVE F-8 140FT W + 70FT N C/L INT	BL	435
BASELINE (1965)	2366.188	2IN IP WITH CONC PLUG + BT SPK @ C/L INT 90TH ST E + AVE F-8	BL	436
BASELINE (1965)	2374.042	CS MON IN WELL 15IN DN @ C/L INT 90TH ST E + AVE G MKD (SEC COR 31 32 6 5 R10W T8N T7N)	BL	437
BASELINE (1965)	2375.376	RD MON IN WELL WITH CONC COLLAR @ SE COR 90TH ST E + AVE G 30FT E + 40FT S C/L INT	BL	438
BASELINE (1965)	2386.416	2IN IP IN CONC WITH BR CAP ON C/L AVE G-8 30FT W C/L 90TH ST E MKD (WC SEC 6 R10W T7N)	BL	439
HI VISTA (1965)	2452.097	RDBM TAG CONC LID OF FLAT JUNCTION BOX 250FT W C/L 100TH ST E + 36FT N C/L AVE J	BL	545

QUAD-YEAR	ELEV	DESCRIPTION (INCLUDE QUAD AND YEAR IN DESCRIPTION)	BM NUMBER
HI VISTA (1965)	2449.192	L+T 2IN DN @ C/L INT AVE J + 100TH ST E	BL 546
HI VISTA (1965)	2467.000	RDBM TAG CONC PUMP BASE (OLD) 60FT W C/L 100TH ST E + 130FT N C/L AVE J-8	BL 547
HI VISTA (1965)	2464.550	CS MON 14IN DN @ C/L INT 100TH ST E + AVE J-8 MKD (1/4 SEC COR 20-21 R-10-W T-7-N)	BL 548
HI VISTA (1965)	2478.629	CS MON 12IN DN @ C/L INT 100TH ST E + AVE K MKD (T7N R10W 20-21-28-29 SEC COR)	BL 549
HI VISTA (1965)	2480.268	L+T CONC PORCH TO HSE NO 9861 40FT N + 45FT W C/L INT 100TH ST E + AVE K	BL 550
HI VISTA (1965)	2474.871	CS MON (S EDGE) IN WELL 18IN DN @ C/L INT AVE K + 95TH ST E PROP MKD (1/4 COR 20 29 T7N R10W)	BL 552
BASELINE (1965)	2606.353	USGS MON IN TOP OF 6IN CONC POST FLUSH 26FT E C/L 180TH ST E (DIRT RD) 32FT S C/L AVE M (DIRT RD) 60FT SE WHITE CONC SIGN POST MKD (LS 18 1929)	BL 1064
BASELINE (1965)	2593.968	CSBM MON 6IN UP 30FT N C/L AVE M + 34FT W C/L 175TH ST E 39FT SW 2IN IP WITH CS TAG 12IN UP MKD (BM 106-89 1959)	BL 1065
BASELINE (1965)	2584.501	CSBM MON 6IN UP ON SW COR AVE M + 170TH ST E 124FT S + 23FT W C/L INT MKD (BM 106-90 1959)	BL 1066
HI VISTA (1965)	2581.179	CS MON IN WELL 10IN DN ON C/L 170TH ST E @ DIRT RD (AVE L-8) TO LINDA MIA RANCH NO 42200 47FT NE PP 423645E MKD (1/4 COR 33 34 T7N R9W)	BL 1067
HI VISTA (1965)	2578.403	CS MON IN WELL 10IN DN @ C/L INT 170TH ST E + AVE L (DIRT) 64FT SE PP 423633E MKD (SEC COR 33 34 27 28 R9W T7N)	BL 1068
HI VISTA (1965)	2561.827	USGS MON 6IN UP 27FT S C/L AVE K-8 + 250FT W C/L 170TH ST E 7FT SW PP 423619E MKD (LS 17 1929)	BL 1069
HI VISTA (1965)	2551.734	CSBM MON 6IN UP 19FT S C/L AVE K-8 + 0.5MI W 170TH ST E MKD (BM 106-94 1959)	BL 1070
HI VISTA (1965)	2538.826	CSBM MON 6IN UP 18FT W C/L 160TH ST E + 550FT N AVE K-8 3FT S PP 423723E MKD (BM 106-95 1959)	BL 1071
HI VISTA (1965)	2534.127	CSBM MON 6IN UP 23FT N C/L AVE K + 205FT W C/L 160TH ST E 5FT N PP 423712E MKD (BM 106-96 1959)	BL 1072
HI VISTA (1965)	2526.055	CSBM MON 6IN UP 23FT N C/L AVE K + 16FT E C/L 155TH ST E 5FT N PP K7746Y 74FT SE WATER WELL SHAFT MKD (BM 106-97 1959)	BL 1073
HI VISTA (1965)	2516.768	CSBM MON 6IN UP 17FT E C/L 150TH ST E + 83FT N C/L AVE K 10FT S PP 274145E MKD (BM 106-98 1959)	BL 1074
BASELINE (1965)	2443.850	CSBM MON 4IN UP NR SW COR EDISON PIUTE SUBSTA 45FT N C/L AVE J + 40FT E C/L 90TH ST E MKD (BM 107-24 1961)	BL 1075
HI VISTA (1965)	2462.424	RD BR CAP MON IN WELL W/COVER 5FT E PP NO K8333Y 30FT N C/L AVE J + 195FT W C/L 105TH ST E (PROP) 2IN IP WITNESS 3FT UP 2FT N	BL 1076

QUAD-YEAR	ELEV	DESCRIPTION (INCLUDE QUAD AND YEAR IN DESCRIPTION)	BM NUMBER
HI VISTA (1965)	2459.278	RD BR CAP MON IN WELL W/COVER 5FT W PP NO K8335Y 30FT N C/L AVE J + 200FT E C/L 105TH ST E (PROP) 2IN IP WITNESS 3FT UP 2FT N	BL 1077
HI VISTA (1965)	2453.388	CS MON 15IN DN @ C/L INT AVE J + 110TH ST E MKD (15 16 21 22 T7N R10W)	BL 1078
HI VISTA (1965)	2454.503	RD MON IN WELL W/COVER 72FT N C/L AVE J + 30FT E C/L 110TH ST E 2IN IP WITNESS 3FT UP 2FT S	BL 1079
HI VISTA (1965)	2460.146	RD MON IN WELL W/COVER 4FT E PP NO 918158E 30FT N C/L AVE J + 105FT W C/L 115TH ST E (PROP) 2IN IP WITNESS 3FT UP 2FT N	BL 1080
HI VISTA (1965)	2458.511	RD MON IN WELL W/COVER 4FT W PP NO 918590E 30FT N C/L AVE J + 190FT E C/L 115TH ST E (PROP) 2IN IP WITNESS 3FT UP 2FT N	BL 1081
HI VISTA (1965)	2459.656	RD MON IN WELL 13FT E PP NO 918598E 30FT N C/L AVE J + 66FT W C/L 120TH ST E (PROP) 2IN IP WITNESS 3FT UP 2FT N	BL 1082
HI VISTA (1965)	2457.945	RD MON IN WELL W/COVER 5FT W PP NO 1048308E 30FT N C/L AVE J + 195FT E C/L 120TH ST E (PROP) 2IN IP WITNESS 3FT UP 2FT N	BL 1083
HI VISTA (1965)	2462.513	RD MON IN WELL W/COVER 7FT E PP NO 1014830E 30FT N C/L AVE J + 180FT W C/L 125TH ST E 2IN IP WITNESS 3FT UP 2FT N	BL 1084
HI VISTA (1965)	2463.353	RD MON IN WELL W/COVER 7FT W PP NO 1014867E 30FT N C/L AVE J + 145FT E C/L 125TH ST E 2IN IP MKR 3FT UP 2FT N	BL 1085
HI VISTA (1965)	2465.936	RD MON IN WELL W/COVER 5FT W PP NO 409086E 20FT N C/L AVE J + 210FT W C/L 130TH ST E 2IN IP WITNESS 3FT UP 2FT N	BL 1086
HI VISTA (1965)	2465.953	CS MON IN WELL @ C/L INT AVE J + 130TH ST E MKD (13 14 23 24 T7N R10W)	BL 1087
HI VISTA (1965)	2473.695	CS MON IN WELL @ C/L INT AVE J + 135TH ST E MKD (1/4 COR 13 24 T7N R10W)	BL 1088
HI VISTA (1965)	2477.370	RD MON IN WELL W/COVER 5FT NE PP NO 1014874E 35FT N C/L AVE J + 360FT E 135TH ST E 2IN IP WITNESS 3FT UP 2FT N	BL 1089
HI VISTA (1965)	2484.422	CS MON IN WELL @ C/L INT AVE J + 140TH ST E MKD (13 24 18 19 T7N R10W R9W)	BL 1090
HI VISTA (1965)	2487.375	CSBM MON 6IN UP 35FT W C/L 140TH ST E + 90FT N C/L AVE J MKD (BM 106-102 1959)	BL 1091
HI VISTA (1965)	2488.719	CSBM MON 6IN UP 39FT S C/L AVE J NR C/L 145TH ST E 57FT S PP 390499E MKD (BM 106-101 1959)	BL 1092
HI VISTA (1965)	2490.902	CSBM MON 6IN UP 18FT E C/L 150TH ST E + 39FT S C/L AVE J MKD (BM 106-100 1959)	BL 1093
HI VISTA (1965)	2503.905	CSBM MON 6IN UP 19FT E C/L 150TH ST E @ DIRT RD 0.5MI N AVE K 4FT E PP 951510E MKD (BM 106-99 1959)	BL 1094

QUAD-YEAR	ELEV	DESCRIPTION (INCLUDE QUAD AND YEAR IN DESCRIPTION)	BM NUMBER
HI VISTA (1965)	2516.475	L+T SE COR OF 3FT SQ CONC SLAB 52FT W C/L 150TH ST E + 140FT N C/L AVE K	BL 1095
HI VISTA (1965)	2529.639	RDBM MON IN WELL W/COVER 35FT E C/L 150TH ST E + 100FT N C/L AVE K-8 (UNIMPROVED) 2IN IP WITNESS 3FT UP 2FT E	BL 1096
HI VISTA (1965)	2530.991	RDBM MON IN WELL W/COVER 35FT E C/L 150TH ST E + 100FT S C/L AVE K-8 (UNIMPROVED) 2IN IP WITNESS 3FT UP 2FT E	BL 1097
HI VISTA (1965)	2548.227	RDBM MON IN WELL W/COVER 35FT E C/L 150TH ST E + 100FT N C/L AVE L (UNIMPROVED) 2IN IP WITNESS 3FT UP 2FT E	BL 1098
HI VISTA (1965)	2547.301	CS MON IN WELL @ C/L INT 150TH ST E + AVE L MKD (SEC COR 29 30 31 32 T7N R9W)	BL 1099
HI VISTA (1965)	2560.811	CS MON IN WELL @ C/L INT 150TH ST E + AVE L-8 MKD (1/4 COR 31 32 T7N R9W)	BL 1101
BASELINE (1965)	2575.451	CS MON IN WELL 8IN DN @ C/L INT AVE M + 150TH ST E MKD (SEC COR 31 32 5 6 T6N T7N R9W)	BL 1102
BASELINE (1965)	2576.140	RDBM MON IN WELL @ SE COR AVE M + 150TH ST E 193FT S + 28FT E C/L INT 2IN IP MKR 3FT UP 2FT N	BL 1103
HI VISTA (1965)	2469.829	CS MON IN WELL 12IN DN @ C/L INT 140TH ST E + PROP AVE I-8 105FT S PP 1014890E MKD (1/4 COR 13 18 R9W T7N)	BL 1141
HI VISTA (1965)	2469.089	CSBM MON 6IN UP 32FT W C/L 140TH ST E + 690FT N AVE I-8 4FT S PP 1014882E MKD (BM 106-103 1959)	BL 1142
HI VISTA (1965)	2459.282	CS MON IN WELL 21IN DN @ C/L INT 140TH ST E + FUT AVE I MKD (SEC COR 12 13 17 18 R10W T7N)	BL 1143
HI VISTA (1965)	2449.625	CS MON IN WELL 9IN DN @ C/L INT 140TH ST E + AVE H-8 225FT S OF S SIDE PROD HSE 45615 MKD (1/4 COR 12 7 R10W R9W T7N)	BL 1144
HI VISTA (1965)	2442.057	CSBM MON 6IN UP @ NW COR 140TH ST E + AVE H 33FT W + 68FT N C/L INT MKD (BM 106-106 1959)	BL 1145
HI VISTA (1965)	2440.569	CS MON IN WELL 20IN DN @ C/L INT 140TH ST E + AVE H MKD (SEC COR 1 6 12 7 R10W R9W T7N)	BL 1146
HI VISTA (1965)	2449.265	CS MON IN WELL 21IN DN @ C/L 140TH ST E 10FT S C/L AVE G-8 65FT SE PP 767477E + 80FT SW PP 878100E MKD (1/4 COR 1 6 R10W R9W T7N)	BL 1147
HI VISTA (1965)	2451.537	CSBM MON 6IN UP @ NW COR 140TH ST E + AVE G 60FT W + 32FT N C/L INT MKD (BM 106-108 1959)	BL 1148
HI VISTA (1965)	2450.779	CS MON IN WELL 24IN DN @ C/L INT 140TH ST E + AVE G MKD (SEC COR 36 31 1 6 T7N T8N R9W R10W)	BL 1149
HI VISTA (1965)	2460.703	CSBM MON 6IN UP 49FT E C/L 140TH ST E + 31FT N C/L FUT AVE F MKD (BM 106-110 1959)	BL 1151
HI VISTA (1965)	2458.233	CS MON IN WELL 10IN DN @ C/L INT 140TH ST E + FUT AVE F 71FT NW 2IN IP + PLUG 6IN UP MKD (SEC COR 25 30 31 36 R10W R9W T8N)	BL 1152

QUAD-YEAR	ELEV	DESCRIPTION (INCLUDE QUAD AND YEAR IN DESCRIPTION)	BM NUMBER
HI VISTA (1965)	2424.381	CSBM MON 6IN UP 48FT W C/L 140TH ST E + 31FT N C/L AVE E MKD (BM 106-112 1959)	BL 1154
HI VISTA (1965)	2424.319	CS MON IN WELL 6IN DN @ C/L INT 140TH ST E + AVE E MKD (SEC COR 19 24 25 30 R10W R9W T8N)	BL 1155
HI VISTA (1965)	2372.060	CSBM MON 6IN UP 32FT S C/L AVE E + 13FT W C/L 135TH ST E 14FT S PP 759331E MKD (BM 106-113 1959)	BL 1156
HI VISTA (1965)	2387.797	CSBM MON 6IN UP 29FT S C/L AVE E + 36FT W C/L 130TH ST E 33FT W PP 759325E MKD (BM 106-114 1959)	BL 1157
HI VISTA (1965)	2363.615	CS MGN IN WELL 14IN DN @ C/L INT AVE E + 125TH ST E 22FT N PP 441562E MKD (1/4 COR 23 26 R10W T8N)	BL 1158
HI VISTA (1965)	2358.018	CSBM MON 6IN UP 23FT N C/L AVE E + 196FT W C/L 120TH ST E 3FT E PP 390066E MKD (BM 106-116 1959)	BL 1159
HI VISTA (1965)	2362.228	CSBM MON 6IN UP 28FT N C/L AVE E + 259FT W C/L 115TH ST E 51FT E CTR DIRT RD TO HSE 11337 4FT N PP 390054E MKD (BM 106-117 1959)	BL 1160
HI VISTA (1965)	2357.040	CSBM MON 6IN UP 24FT N C/L AVE E + 48FT E C/L 110TH ST E 3FT N PP 381243E MKD (BM 106-118 1959)	BL 1161
HI VISTA (1965)	2353.615	CSBM MON 6IN UP 25FT S C/L AVE E + 38FT E C/L 105TH ST E 3FT S PP 381231E MKD (BM 106-119 1959)	BL 1162
HI VISTA (1965)	2349.984	CSBM MON 6IN UP 48FT N C/L AVE E + 22FT E C/L 100TH ST E 14FT S TP K2318Y MKD (BM 106-120 1959)	BL 1163
HI VISTA (1965)	2344.319	CSBM MON 6IN UP 21FT S C/L AVE E + 270FT W C/L 95TH ST E MKD (BM 106-121 1959)	BL 1164
BASELINE (1965)	2343.237	CSBM MON 6IN UP 32FT E C/L 90TH ST E + 46FT S C/L AVE E 7FT SE PP 538296E MKD (BM 106-122 1959)	BL 1165
BASELINE (1965)	2348.476	RDBM TAG CONC FOOTING OF SUPPORT @ NW COR HAY SHED 50FT E C/L 90TH ST E + 50FT S C/L AVE E-8	BL 1167
BASELINE (1965)	2357.291	CSBM MON 2IN UP 30FT N C/L AVE F + 77FT E C/L 90TH ST E MKD (BM 116-6 1961)	BL 1168
BASELINE (1965)	2366.969	CSBM MON 2IN UP 80FT N C/L AVE F-8 + 30FT E C/L 90TH ST E MKD (BM 116-5 1961)	BL 1169
BASELINE (1965)	2376.516	CSBM MON 2IN UP 27FT W C/L 90TH ST E + 70FT S C/L AVE G MKD (BM 116-4 1961)	BL 1170
BASELINE (1965)	2386.033	CSBM MON 4IN UP 80FT E C/L 90TH ST E + 20FT S C/L AVE G-8 25FT W PP 951530E MKD (BM 116-3 1961)	BL 1171
BASELINE (1965)	2397.331	CSBM MON 4IN UP 35FT N + 115FT E C/L INT AVE H + 90TH ST E MKD (BM 116-2 1961)	BL 1172

QUAD-YEAR	ELEV	DESCRIPTION (INCLUDE QUAD AND YEAR IN DESCRIPTION)	BM NUMBER
BASELINE (1965)	2404.665	CSBM MON 3IN UP 30FT E C/L 90TH ST E + 155FT N C/L AVE H-8 MKD (BM 116-1 1961)	BL 1173
BASELINE (1965)	2415.682	CSBM MON 4IN UP 68FT W C/L 90TH ST E + 30FT S C/L AVE I 2FT E PP 955497E MKD (BM 107-26 1961)	BL 1174
BASELINE (1965)	2426.433	CSBM MON 4IN UP 35FT E C/L 90TH ST E + 550FT N AVE I-8 3FT E PP 771405E MKD (BM 107-25 1961)	BL 1175
BASELINE (1965)	2457.139	CSBM MON 4IN UP 90FT W C/L 90TH ST E + 29FT S C/L AVE J-8 1FT N OF N P/L GLENDALE AUTO PARTS YD MKD (BM 107-23 1961)	BL 1177
BASELINE (1965)	2475.631	CSBM MON 27FT W C/L 90TH ST E + 60FT S C/L AVE K 2FT W TP K9248Y MKD (BM 107-22 1961)	BL 1178
BASELINE (1965)	2490.569	CSBM MON 3IN UP 33FT E C/L 90TH ST E + 45FT S C/L AVE K-8 3FT E PP 771366E MKD (BM 107-21 1961)	BL 1179
BASELINE (1965)	2498.260	CSBM MON 60FT W C/L 90TH ST E + 30FT S C/L AVE L 3FT S PP 800334E MKD (BM 107-20 1961)	BL 1180
BASELINE (1965)	2513.418	CSBM MON 34FT E C/L 90TH ST E + 35FT N C/L AVE L-8 3FT S PP 771347E MKD (BM 107-19 1961)	BL 1181
BASELINE (1965)	2526.145	CSBM MON 4IN UP 36FT N C/L AVE M + 36FT E C/L 90TH ST E MKD (BM 107-18 1961)	BL 1182
BASELINE (1965)	2530.161	CS MON IN WELL 36IN DN @ C/L INT AVE M + FUT 95TH ST E MKD (1/4 COR 32 5 T6N T7N R10W)	BL 2036
BASELINE (1965)	2533.031	CSBM MON 4IN UP 38FT S C/L AVE M + 89FT E C/L 95TH ST E BET PP 1001560E + 1001561E MKD (BM 122-1 1961) 2IN IP MKR 3FT UP 2FT N	BL 2037
BASELINE (1965)	2539.330	CS MON 8IN DN IN WELL @ C/L INT AVE M + 100TH ST E MKD (SEC COR 32 33 5 4 T6N T7N R10W)	BL 2038
BASELINE (1965)	2541.495	CSBM MON 4IN UP @ SE COR AVE M + 100TH ST E 26FT S + 75FT E C/L INT MKD (BM 122-2 1961) 2IN IP MKR 3FT UP 2FT N	BL 2039
BASELINE (1965)	2547.132	CSBM MON 4IN UP @ SE COR AVE M + 105TH ST E 66FT E + 28FT S C/L INT MKD (BM 122-3 1961) 2IN IP MKR 3FT UP 2FT N	BL 2040
BASELINE (1965)	2550.037	CSBM MON 4IN UP @ SE COR AVE M + 110TH ST E 26FT S + 38FT E C/L INT MKD (BM 122-4 1961) 2IN IP MKR 3FT UP 2FT W	BL 2041
BASELINE (1965)	2549.245	RDBM TAG IN 4FT SQ CONC SLAB OF ABANDONED FARM HSE 210FT N C/L AVE M (DIRT RD) + 650FT E FUT 115TH ST E	BL 2042
BASELINE (1965)	2546.672	CS MON FLUSH @ FUT C/L INT AVE M + 120TH ST E MKD (SEC COR 34 35 3 2 T6N T7N R10W) 2IN IP MKR 3FT UP 2FT E	BL 2043
BASELINE (1965)	2537.774	CS MON 6IN UP @ FUT C/L INT AVE M + 125TH ST E MKD (1/4 COR 2 35 T6N T7N R10W)	BL 2044
BASELINE (1965)	2537.915	CS MON 6IN UP @ FUT C/L INT AVE M + 130TH ST E MKD (SEC COR 35 36 2 1 T6N T7N R10W)	BL 2045

QUAD-YEAR	ELEV	DESCRIPTION (INCLUDE QUAD AND YEAR IN DESCRIPTION)	BM NUMBER
BASELINE (1965)	2551.888	CS MON 6IN UP @ FUT C/L INT AVE M + 135TH ST E MKD (1/4 SEC COR 36 1 T6N T7N R10W)	BL 2046
BASELINE (1965)	2655.044	CS MON 10IN UP @ FUT C/L INT AVE M + 140TH ST E MKD (SEC COR 1 6 31 36 T6N T7N R10W R9W)	BL 2047
BASELINE (1965)	2688.857	2IN IP WITH CUT SPK IN CONC 6IN UP @ 1/4 COR 31 6 R9W T6N T7N (FUT C/L INT AVE M + 145TH ST E)	BL 2048
BASELINE (1965)	2575.722	CSBM MON 4IN UP ON NE COR AVE M + 150TH ST E 53FT N + 33FT E C/L INT MKD (BM 115-11 1961)	BL 2049
BASELINE (1965)	2575.756	CS MON IN WELL @ C/L INT AVE M + FUT 155TH ST E MKD (1/4 SEC COR 32 5 T6N T7N R9W)	BL 2050
BASELINE (1965)	2579.384	2IN IP CONC PLUG + NAIL 8IN UP ON NE COR AVE M + FUT 155TH ST E 50FT N + 50FT E C/L INT	BL 2051
BASELINE (1965)	2577.105	2IN IP CONC PLUG + NAIL 8IN UP ON SW COR AVE M + FUT 160TH ST E 50FT S + 50FT W C/L INT	BL 2052
BASELINE (1965)	2577.175	2IN IP CONC PLUG + NAIL 8IN UP ON NE COR AVE M + FUT 160TH ST E 50FT N + 50FT E C/L INT	BL 2053
BASELINE (1965)	2577.919	2IN IP CONC PLUG + NAIL FLUSH ON SW COR AVE M + FUT 165TH ST E 50FT S + 50FT W C/L INT	BL 2054
BASELINE (1965)	2578.137	2IN IP CONC PLUG + NAIL 6IN UP ON NE COR AVE M + FUT 165TH ST E 50FT N + 50FT E C/L INT	BL 2055
BASELINE (1965)	2584.669	2IN IP CONC PLUG + NAIL 6IN UP ON NW COR AVE M + 170TH ST E 50FT N + 50FT W C/L INT	BL 2056
HI VISTA (1965)	2561.270	CS MON IN WELL @ C/L INT 170TH ST E + AVE K-8 MKD (1/4 COR 27 28 R9W T7N)	BL 2109
HI VISTA (1965)	2531.310	CSBM MON IN CONC POST 12IN DN 33FT E C/L 150TH ST E + 17FT S C/L AVE K-8 MKD (BM 115-14 1961) 2IN IP MKR 3FT UP 2FT E	BL 2110
HI VISTA (1965)	2489.038	CS MON (NE EDGE) 8IN DN @ C/L INT AVE J + 150TH ST E MKD (SEC COR 17 18 19 20 R9W T7N)	BL 2160
HI VISTA (1965)	2489.255	CS MON IN WELL 6IN DN @ C/L INT AVE J + FUT 145TH ST E MKD (1/4 COR 18 19 R9W T7N)	BL 2161
HI VISTA (1965)	2451.856	2IN IP 6IN UP ON C/L PROD AVE G-8 50FT E C/L 140TH ST E	BL 2162
HI VISTA (1965)	2455.415	2IN IP 6IN UP @ SW COR 140TH ST E + FUT AVE F-8 25FT S + 50FT W C/L INT	BL 2163
HI VISTA (1965)	2461.750	2IN IP 6IN UP @ NE COR 140TH ST E + FUT AVE E-8 50FT N + 50FT E C/L INT	BL 2164
BASELINE (1965)	2342.774	L+T S END GAS PUMP ISL @ NE COR 90TH ST E + AVE E 75FT N + 80FT E C/L INT	BL 2165
BASELINE (1965)	2343.551	CS MON FLUSH ON SW COR 90TH ST E + AVE E-8 60FT S + 27FT W C/L INT MKD (BM 116-7 1961)	BL 2166
BASELINE (1965)	2385.472	CS MON IN WELL 8IN DN @ C/L INT 90TH ST E + AVE G-8 MKD (1/4 COR 5 6 R10W T7N)	BL 2167

QUAD-YEAR	ELEV	DESCRIPTION (INCLUDE QUAD AND YEAR IN DESCRIPTION)	BM NUMBER
BASELINE (1965)	2403.249	CS MON IN WELL 9IN DN @ C/L INT 90TH ST E + FUT AVE H-8 MKD (1/4 COR 7 8 T7N R10W)	BL 2168
HI VISTA (1965)	2447.985	2IN IP + CS TAG 4IN UP @ NW COR AVE J + 95TH ST E 40FT N + 40FT W C/L INT	BL 2169
BASELINE (1965)	2488.948	CS MON (S EDGE) IN WELL 8IN DN @ C/L INT 90TH ST E + AVE K-8 MKD (1/4 COR 29 30 R10W T7N)	BL 2189
BASELINE (1965)	2511.991	CS MON IN WELL 8IN DN @ C/L INT 90TH ST E + FUT AVE L-8 MKD (1/4 SEC COR 31 32 R10W T7N)	BL 2190
HI VISTA (1965)	2433.272	2IN IP + BOLT IN WELL 18IN DN @ C/L INT AVE H + PROP 135TH ST E	BL 2337
HI VISTA (1965)	2434.345	2IN IP (N EDGE) 4IN UP ON C/L PROP 135TH ST E 40FT N C/L AVE H	BL 2338
HI VISTA (1965)	2431.422	L+T W SIDE STANDPIPE @ NE COR AVE H + 130TH ST E 62FT N + 82FT E C/L INT	BL 2339
HI VISTA (1965)	2427.340	CS MON IN WELL 6IN DN @ C/L INT AVE H + 130TH ST E MKD (SEC COR 1 2 12 11 R10W T7N)	BL 2340
HI VISTA (1965)	2430.022	2IN IP CONC PLUG + CS TAG @ SE COR AVE H + 125TH ST E 40FT E + 40FT S C/L INT	BL 2341
HI VISTA (1965)	2426.486	CS MON (W EDGE) IN WELL 6IN DN @ C/L INT AVE H + 125TH ST E MKD (1/4 COR 2 11 R10W T7N)	BL 2342
HI VISTA (1965)	2419.041	2IN IP CONC PLUG + NAIL (NW EDGE) @ SE COR AVE H + 120TH ST E 50FT S + 50FT E C/L INT	BL 2343
HI VISTA (1965)	2417.595	CS MON (N EDGE) IN WELL 18IN DN @ C/L INT AVE H + 120TH ST E MKD (SEC COR 3 2 10 11 R10W T7N)	BL 2344
HI VISTA (1965)	2417.030	2IN IP CONC PLUG + NAIL (S EDGE) 9IN UP @ SE COR 115TH ST E + AVE H 40FT S + 40FT E C/L INT	BL 2345
HI VISTA (1965)	2414.447	CS MON (N EDGE) IN WELL 18IN DN @ C/L INT 115TH ST E + AVE H MKD (1/4 COR 3 10 R10W T7N)	BL 2346
HI VISTA (1965)	2413.182	CS MON (E EDGE) IN WELL 6IN DN @ C/L INT 110TH ST E + AVE H MKD (SEC COR 4 3 9 10 R10W T7N)	BL 2347
HI VISTA (1965)	2414.577	2IN IP CONC PLUG + NAIL (SE EDGE) 6IN UP @ NW COR AVE H + 110TH ST E 39FT N + 40FT W C/L INT	BL 2348
HI VISTA (1965)	2402.744	CS MON (NE EDGE) IN WELL 26IN DN @ C/L INT AVE H + PROP 105TH ST E MKD (1/4 COR 4 9 R10W T7N)	BL 2349
HI VISTA (1965)	2400.147	CS MON IN WELL 12IN DN @ C/L INT AVE H + 100TH ST E MKD (5 4 8 9 R10W T7N)	BL 2350
HI VISTA (1965)	2398.643	CS MON IN WELL 8IN DN @ C/L INT AVE H + FUT 95TH ST E MKD (1/4 COR 5 8 T7N R10W)	BL 2351
HI VISTA (1965)	2375.602	2IN IP 8IN UP ON NE COR 120TH ST E + FUT AVE E-8 50FT N + 50FT E C/L INT	BL 2352
HI VISTA (1965)	2375.021	CS MON IN WELL 6IN DN @ C/L INT 120TH ST E + FUT AVE E-8 MKD (1/4 COR 26 27 R10W T8N)	BL 2353

QUAD-YEAR	ELEV	DESCRIPTION (INCLUDE QUAD AND YEAR IN DESCRIPTION)	BM NUMBER
HI VISTA (1965)	2379.737	CS MON IN WELL 24IN DN @ C/L INT 120TH ST E + FUT AVE F MKD (SEC COR 2 3 3 35 T8N R10W)	BL 2354
HI VISTA (1965)	2381.864	2IN IP 8IN UP ON SE COR 120TH ST E + FUT AVE F 50FT S + 50FT E C/L INT	BL 2355
HI VISTA (1965)	2391.557	CS MON IN WELL 6IN DN @ C/L INT 120TH ST E + FUT AVE F-8 MKD (34 35 T8N R10W)	BL 2356
HI VISTA (1965)	2393.515	2IN IP 10IN UP ON SW COR 120TH ST E + FUT AVE F-8 50FT S + 50FT W C/L INT	BL 2357
HI VISTA (1965)	2399.046	CS MON IN WELL 30IN DN @ C/L INT 120TH ST E + FUT AVE G MKD (SEC COR 34 35 3 2 R10W T7N T8N)	BL 2358
HI VISTA (1965)	2408.159	CS MON IN WELL 30IN DN @ C/L INT 120TH ST E + FUT AVE G-8 MKD (1/4 COR 3 2 R10W T7N)	BL 2359
HI VISTA (1965)	2410.545	2IN IP 10IN UP ON SE COR 120TH ST E + FUT AVE G-8 50FT S + 50FT E C/L INT	BL 2360
HI VISTA (1965)	2518.456	BOLT IN WELL 21IN DN @ C/L INT AVE G + 145TH ST E	BL 2379
HI VISTA (1965)	2521.383	CSBM MON NW COR CONC VAULT FOR FIRE HYD 55FT E + 30FT S C/L INT AVE G + 145TH ST E MKD (BM 124-1 1966)	BL 2380
HI VISTA (1965)	2594.381	CS MON (E EDGE) IN WELL 18IN DN @ C/L INT AVE G + 150TH ST E MKD (31 32 6 5 T7N T8N R9W)	BL 2381
HI VISTA (1965)	2598.103	RDBM TAG NW COR CONC VAULT FOR FIRE HYD 31FT S + 77FT E C/L INT AVE G + 150TH ST E	BL 2382
HI VISTA (1965)	2669.395	BOLT IN WELL 14IN DN @ C/L INT AVE G + 155TH ST E	BL 2383
HI VISTA (1965)	2672.773	CSBM MON FLUSH @ NE COR 155TH ST E + AVE G 60FT E + 31FT N C/L INT MKD (BM 124-3 1966) 2IN IP 4FT UP 2FT S	BL 2384
HI VISTA (1965)	2743.264	CS MON (E EDGE) IN WELL @ C/L INT AVE G + 160TH ST E MKD (SEC COR 32 33 5 4 R9W T8N T7N)	BL 2385
HI VISTA (1965)	2747.383	RDBM TAG NW COR CONC BASE FIRE HYD @ SE COR 160TH ST E + AVE G 81FT E + 32FT S C/L INT	BL 2386
HI VISTA (1965)	2849.573	BOLT IN WELL 19IN DN @ C/L INT AVE G + 165TH ST E	BL 2387
HI VISTA (1965)	2855.906	CSBM MON FLUSH @ NE COR AVE G + 165TH ST E 134FT E + 29FT N C/L INT MKD (BM 124-5 1966)	BL 2388
HI VISTA (1965)	2932.375	CS MON (E EDGE) IN WELL 22IN DN @ C/L INT AVE G + 170TH ST E MKD (SEC COR 33 34 4 3 T7N T8N R9W)	BL 2389
HI VISTA (1965)	2935.617	L+BN NW COR CONC BASE OF FIRE HYD @ SE COR AVE G + 170TH ST E 80FT E + 30FT S C/L INT	BL 2390
HI VISTA (1965)	2973.765	CS MON IN WELL 6IN DN @ C/L INT AVE G + 175TH ST E MKD (1/4 COR 34 3 R9W T8N T7N)	BL 2391
HI VISTA (1965)	2975.058	RDBM TAG NW COR CONC BASE OF FIRE HYD @ SE COR AVE G + 175TH ST E 175FT E + 33FT S C/L INT	BL 2392

QUAD-YEAR	ELEV	DESCRIPTION (INCLUDE QUAD AND YEAR IN DESCRIPTION)	BM NUMBER
HI VISTA (1965)	3048.131	CS MON (S EDGE) IN WELL 14IN DN @ C/L INT AVE G + 180TH ST E MKD (SEC COR 34 35 3 2 R9W T8N T7N)	BL 2393
HI VISTA (1965)	3052.623	RDBM TAG NW COR CONC BASE OF FIRE HYD @ SE COR AVE G + 180TH ST E 80FT E + 32FT S C/L INT	BL 2394
HI VISTA (1965)	3088.303	CS MON (N EDGE) IN WELL 17IN DN @ C/L INT AVE G + 185TH ST E MKD (1/4 COR 35 2 R9W T8N T7N)	BL 2395
HI VISTA (1965)	3090.358	RDBM TAG NW COR CONC BASE OF FIRE HYD @ SE COR AVE G + 185TH ST E 58FT E + 32FT S C/L INT	BL 2396
HI VISTA (1965)	3126.943	CS MON (NE EDGE) IN WELL 18IN DN @ C/L INT AVE G + 190TH ST E MKD (35 36 2 1 T8N T7N R9W)	BL 2397
HI VISTA (1965)	3126.195	2IN IP CONC PLUG + CS TAG (S EDGE) 4IN UP @ NE COR AVE G + 190TH ST E 50FT N + 50FT E C/L INT	BL 2398
HI VISTA (1965)	3072.413	CS MON (E EDGE) IN WELL 19IN DN @ C/L INT AVE G + 195TH ST E MKD (1/4 COR 36 1 T7N T8N R9W)	BL 2399
HI VISTA (1965)	3074.327	2IN IP CONC PLUG + CS TAG 8IN UP @ SW COR AVE G + 195TH ST E 50FT S + 50FT W C/L INT	BL 2400
HI VISTA (1965)	3044.085	CS MON (N EDGE) IN WELL 18IN DN @ C/L INT AVE G + 200TH ST E MKD (SEC COR 36 31 1 6 T7N T8N R8W R9W)	BL 2401
HI VISTA (1965)	3047.464	2IN IP CONC PLUG + CS TAG 4IN UP @ SW COR AVE G + 200TH ST E 50FT S + 50FT W C/L INT	BL 2402
HI VISTA (1965)	3030.865	CS MON (SW EDGE) IN WELL 6IN DN @ C/L INT 200TH ST E + AVE G-8 MKD (1/4 COR 1 6 T7N R8W R9W)	BL 2403
HI VISTA (1965)	3028.542	2IN IP (S EDGE) 3IN UP @ SW COR 200TH ST E + AVE G-8 50FT S + 50FT W C/L INT	BL 2404
HI VISTA (1965)	2995.114	CS MON (S EDGE) IN WELL 8IN DN @ C/L INT 200TH ST E + AVE H MKD (SEC COR 1 6 12 7 R8W R9W T7N)	BL 2405
HI VISTA (1965)	2996.847	1 1/2IN IP CONC PLUG + NAIL @ SW COR 200TH ST E + AVE H 50FT S + 50FT W C/L INT	BL 2406
HI VISTA (1965)	2971.199	CS MON (S EDGE) IN WELL 10IN DN @ C/L INT 200TH ST E + AVE H-8 MKD (1/4 COR 12 7 T7N R9W R8W)	BL 2407
HI VISTA (1965)	2973.662	1 1/2IN IP CONC PLUG + NAIL FLUSH @ SW COR 200TH ST E + AVE H-8 50FT S + 50FT W C/L INT	BL 2408
HI VISTA (1965)	2982.120	CS MON (S EDGE) IN WELL 15IN DN @ C/L INT 200TH ST E + AVE I MKD (SEC COR 12 7 13 18 T7N R8W R9W)	BL 2409
HI VISTA (1965)	2984.971	CS MON 5IN UP @ SW COR 200TH ST E + AVE I 40FT W + 40FT S C/L INT MKD (RPC 1)	BL 2410
HI VISTA (1965)	2958.635	CS MON (S EDGE) IN WELL 8IN DN @ C/L INT AVE I + 3L 195TH ST E PROP MKD (1/4 COR 12 13 T7N R9W)	BL 2411
HI VISTA (1965)	2964.817	CS MON 5IN UP ON C/L 195TH ST E 40FT S C/L AVE I MKD (RPC 3)	BL 2412
HI VISTA (1965)	2908.249	CS MON (S EDGE) IN WELL 12IN DN @ C/L INT AVE I + 190TH ST E MKD (SEC COR 11 12 13 14 R9W T7N)	BL 2413

QUAD-YEAR	ELEV	DESCRIPTION (INCLUDE QUAD AND YEAR IN DESCRIPTION)	BM NUMBER
HI VISTA (1965)	2909.514	CS MON @ SE COR AVE I + 190TH ST E 40FT E + 38FT S C/L INT MKD (RPC 5)	BL 2414
HI VISTA (1965)	2897.631	CS MON 6IN UP 37FT E C/L 190TH ST E + 0.25MI S AVE I MKD (BM RP BC)	BL 2415
HI VISTA (1965)	2907.426	CS MON (S EDGE) IN WELL 6IN DN @ C/L INT 190TH ST E + PROP AVE I-8 MKD (1/4 COR 14 13 T7N R9W)	BL 2416
HI VISTA (1965)	2909.946	CS MON 6IN UP ON C/L PROD AVE I-8 40FT E C/L 190TH ST E MKD (RPA 5)	BL 2417
HI VISTA (1965)	2963.260	CHIS X E EDGE 2IN IP WITH CONC PLUG + CS TAG 6IN UP @ NE COR 190TH ST E + AVE J 40FT N + 40FT E C/L INT	BL 2418
HI VISTA (1965)	2964.641	CS MON 8IN DN @ C/L INT AVE J + 190TH ST E MKD (SEC COR 14 13 23 24 R9W T7N)	BL 2419
HI VISTA (1965)	2964.941	CHIS X E SIDE 2IN IP WITH CONC PLUG + CS TAG 6IN UP @ NW COR AVE J + 190TH ST E 40FT W + 40FT N C/L INT	BL 2420
HI VISTA (1965)	2887.299	CHIS X E EDGE 2IN IP WITH CONC PLUG + NAIL 3IN UP @ NE COR 185TH ST E + AVE J 40FT N + 40FT E C/L INT	BL 2421
HI VISTA (1965)	2881.872	CS MON (N EDGE) 32IN DN @ C/L INT AVE J + 185TH ST E MKD (1/4 COR 14 23 T7N R9W)	BL 2422
HI VISTA (1965)	2883.800	CHIS X W EDGE 2IN IP WITH CONC PLUG + NAIL @ SW COR 185TH ST E + AVE J 40FT S + 40FT W C/L INT	BL 2423
HI VISTA (1965)	2761.807	CS MON (NW EDGE) IN WELL 8IN DN @ C/L INT 180TH ST E + AVE J MKD (SEC COR 15 14 22 23 R9W T7N)	BL 2424
HI VISTA (1965)	2757.860	CHIS X S EDGE 2IN IP WITH CONC PLUG + NAIL 6IN UP @ SW COR 180TH ST E + AVE J 40FT S + 40FT W C/L INT	BL 2425
HI VISTA (1965)	2741.563	CHIS X S EDGE 2IN IP WITH CONC PLUG + NAIL 12IN UP @ SE COR 175TH ST E + AVE J 40FT E + 40FT S C/L INT	BL 2426
HI VISTA (1965)	2739.446	CS MON (N EDGE) IN WELL 12IN DN @ C/L INT 175TH ST E + AVE J MKD (1/4 COR 15 22 T7N R9W)	BL 2427
HI VISTA (1965)	2680.702	CHIS X N EDGE 2IN IP WITH CONC PLUG + NAIL 12IN UP @ SE COR 170TH ST E + AVE J 40FT S + 40FT E C/L INT	BL 2428
HI VISTA (1965)	2677.620	CS MON (NW EDGE) IN WELL 24IN DN @ C/L INT 170TH ST E + AVE J MKD (15 16 21 22 R9W T7N)	BL 2429
HI VISTA (1965)	2580.610	CHIS X N EDGE 2IN IP WITH CONC PLUG + CS TAG 12IN UP @ SE COR 165TH ST E + AVE J 40FT S + 40FT E C/L INT	BL 2430
HI VISTA (1965)	2577.953	CS MON (E EDGE) IN WELL 18IN DN @ C/L INT 165TH ST E + AVE J MKD (1/4 COR 16 21 R9W T7N)	BL 2431
HI VISTA (1965)	2511.891	CS MON (W EDGE) IN WELL 6IN DN @ C/L INT PROP 160TH ST E + AVE J MKD (SEC COR 16 17 20 21 R9W T7N)	BL 2432

QUAD-YEAR	ELEV	DESCRIPTION (INCLUDE QUAD AND YEAR IN DESCRIPTION)	BM NUMBER
HI VISTA (1965)	2512.013	SPK T+W IN 12IN CASING 4IN UP ON C/L PROD 160TH ST E FROM N 40FT S C/L AVE J	BL 2433
HI VISTA (1965)	2493.413	CS MON (N EDGE) IN WELL 6IN DN @ C/L INT AVE J + PROP 155TH ST E MKD (1/4 COR 17 20 T7N R9W)	BL 2434
HI VISTA (1965)	3087.442	GENERAL LAND OFFICE MON 4IN DN @ C/L INT FUT AVE G-8 + 180TH ST E MKD (1/4 COR 2 3 1947)	BL 2435
HI VISTA (1965)	3085.679	PM ON RIM 2IN IP WITH CS TAG 6IN UP ON SW COR FUT AVE G-8 + 180TH ST E 50FT S + 50FT W C/L INT	BL 2436
HI VISTA (1965)	3030.093	GENERAL LAND OFFICE MON 1IN UP @ C/L INT FUT AVE H + 180TH ST E MKD (2 3 10 11 T7N R9W)	BL 2437
HI VISTA (1965)	3033.266	2IN IP 4IN UP ON SW COR FUT AVE H + 180TH ST E 50FT S + 50FT W C/L INT	BL 2438
HI VISTA (1965)	2989.991	CS MON 8IN DN @ C/L INT FUT AVE H-8 + 180TH ST E MKD (1/4 COR 10 11 T7N R9W)	BL 2439
HI VISTA (1965)	2994.176	PM+X SE QUAD 2IN IP 12IN UP ON C/L FUT AVE H-8 + 40FT E C/L 180TH ST E	BL 2440
HI VISTA (1965)	2932.080	2IN IP + CS TAG 5IN UP ON SE COR FUT AVE I + 180TH ST E 50FT S + 50FT E C/L INT	BL 2441
HI VISTA (1965)	2934.927	CHIS X IN BOLT ON FIRE HYD @ ^S NW COR FUT AVE I + 180TH ST E 25FT K + 100FT W C/L INT	BL 2442
HI VISTA (1965)	2897.281	CS MON 12IN DN @ ^S C/L INT FUT AVE I + 185TH ST E MKD (1/4 COR 11 14 R9W T7N)	BL 2443
HI VISTA (1965)	2897.398	2IN IP + CS TAG 6IN UP ON SE COR FUT AVE I + 185TH ST E 50FT S + 50FT E C/L INT	BL 2444
HI VISTA (1965)	2945.839	CS MON (S EDGE) 12IN DN @ C/L INT 200TH ST E + LANCASTER BLVD MKD (1/4 COR 13 18 T7N R8W R9W)	BL 3170
HI VISTA (1965)	2945.641	CS MON 6IN UP ON C/L LANCASTER BLVD 98FT W C/L 200TH ST E MKD (BM RPA-1)	BL 3171
HI VISTA (1965)	2920.714	CSBM MON 30FT N C/L AVE J + 164FT E C/L 200TH ST E MKD (BM 124-18 1966)	BL 3172
HI VISTA (1965)	2923.039	CHIS X N EDGE 1-1/2IN IP @ SW COR 200TH ST E + AVE J 51FT S + 61FT W C/L INT	BL 3173
HI VISTA (1965)	2919.007	CHIS X E EDGE 1-1/2IN IP FLUSH @ SE COR AVE J + 195TH ST E 48FT E + 49FT S C/L INT	BL 3174
HI VISTA (1965)	2920.496	CHIS X NW EDGE 1-1/2IN IP 2IN UP @ NW COR AVE J + 195TH ST E 50FT W + 48FT N C/L INT	BL 3175
HI VISTA (1965)	2887.783	CS MON (N EDGE) 6IN UP @ C/L INT 200TH ST E + AVE J-8 MKD (1/4 COR 24 19 T7N R9W R8W)	BL 3176
HI VISTA (1965)	2889.367	2IN IP (E EDGE) 8IN UP @ SW COR 200TH ST E + AVE J-8 32FT S + 39FT W C/L INT	BL 3177
HI VISTA (1965)	2889.321	CS MON (N EDGE) 6IN UP @ C/L INT 200TH ST E + AVE K MKD (SEC COR 24 19 25 30 T7N R9W R8W)	BL 3178

QUAD-YEAR	ELEV	DESCRIPTION (INCLUDE QUAD AND YEAR IN DESCRIPTION)	BM NUMBER
HI VISTA (1965)	2884.807	2IN IP (E EDGE) 8IN UP @ SE COR 200TH ST E + AVE BL K 39FT S + 38FT E C/L INT	3179
HI VISTA (1965)	2808.160	NAIL IN 1-1/2IN IP 2IN UP @ C/L INT 200TH ST E + BL AVE K-8	3180
HI VISTA (1965)	2808.407	CSBM MON 2IN UP @ SW COR 200TH ST E + AVE K-8 38FT S + 31FT W C/L INT MKD (BM 124-22 1966)	BL 3181
HI VISTA (1965)	2746.712	2IN IP (N EDGE) 3IN UP @ NE COR 200TH ST E + FUT BL AVE L 35FT N + 40FT E C/L INT	3182
HI VISTA (1965)	2744.197	CS MON (S EDGE) 12IN DN @ C/L INT 200TH ST E + BL FUT AVE L MKD (SEC COR 25 30 36 31 T7N R9W R8W)	3183
HI VISTA (1965)	2714.609	NAIL IN 1-1/2IN IP 12IN DN @ C/L INT 200TH ST E BL + FUT AVE L-8	3184
HI VISTA (1965)	2715.358	CSBM MON @ SW COR 200TH ST E + FUT AVE L-8 33FT BL S + 31FT W C/L INT MKD (BM 124-24 1966)	3185
BASELINE (1965)	2678.444	CS MON (N EDGE) IN WELL 4IN DN @ C/L INT 200TH BL ST E + AVE M MKD (SEC COR 36 31 1 6 T7N T6N R9W R8W)	3186
BASELINE (1965)	2679.480	2IN IP (S EDGE) WITH PLUG + CE TAG @ SW COR BL 200TH ST E + AVE M 46FT S + 51FT W C/L INT	3187
BASELINE (1965)	2665.889	1-1/2IN IP (W EDGE) + NAIL 4IN DN @ C/L INT BL AVE M + FUT 195TH ST E	3188
BASELINE (1965)	2666.045	CHIS X ON N EDGE 1-1/2IN IP WITH CE TAG 6IN UP BL ON C/L PROD FUT 195TH ST E 50FT S C/L AVE M	3189
BASELINE (1965)	2650.583	CS MON 6IN DN @ C/L INT FUT AVE M + FUT 190TH ST BL E MKD (SEC COR 35 36 2 1 T6N T7N R9W)	3190
BASELINE (1965)	2651.544	CHIS X ON W EDGE 2IN IP WITH CE TAG 6IN UP @ NW BL COR FUT AVE M + FUT 190TH ST E 50FT N + 50FT W C/L INT	3191
BASELINE (1965)	2625.380	NAIL IN 2IN IP 6IN DN @ C/L INT FUT AVE M + FUT BL 185TH ST E	3192
BASELINE (1965)	2628.928	CHIS X ON N EDGE 2IN IP WITH CE TAG 4IN UP ON BL C/L PROD FUT 185TH ST E 50FT S C/L FUT AVE M	3193
BASELINE (1965)	2606.161	2IN IP (S EDGE) WITH PLUG + CE TAG 6IN UP @ NW BL COR AVE M + 180TH ST E 40FT N + 54FT W C/L INT	3194
BASELINE (1965)	2554.186	2IN IP (N EDGE) WITH CONC PLUG + CE TAG 6IN UP BL ON C/L FUT 175TH ST E 50FT S C/L AVE M	3195